



MCSTAIN  
NEIGHBORHOODS®

We're on a mission here.®

## Classic Collection Standard Features

TRIPLE CROWN  
*Meadows*

### Rich Interiors with Taste and Style

- Kichler Lighting in Brushed Nickel
- Kwikset Lever Door Hardware and Taymor Bath Accessories in Brushed Nickel
- Premium Kwal Paints
- Wide Spread Bath Faucets in Brushed Nickel
- Rectangular White Sinks and Elongated Toilets
- Furniture Style Cabinet with Vessel Sink at Powder Bath
- Master Bath Glass Shower Enclosure in Brushed Nickel
- Corian Bath Counter Tops and Wall Tile
- 2 1/4" Red Oak Hardwood Flooring in Kitchen, Entry and Powder Bath
- 12" x 12" Ceramic Tile Flooring in Bathrooms, Laundry and Garage Entry Areas
- Heatilator Novus Gas Fireplace with Mantle and Tile Surround
- Structured Wiring System
- Knockdown Wall Texture
- 5" Painted Wood Baseboards
- 4" Painted Wood Door Casing and 6" Wood Door Headers
- Wood Laundry and Closet Shelving
- 2 Panel Square Top Interior Doors
- Wood Open Rail Stairway Systems

### Impressive Kitchen Features

- Slab Granite Countertops with 4" Granite Back Splash
- Gourmet Kitchen Appliances
- Whirlpool Stainless Steel 5 Burner Gas Cooktop
- Whirlpool Stainless Steel Wall Oven and Microwave Combo
- Whirlpool Stainless Steel Canopy or Downdraft Hood (model no varies per plan)
- Whirlpool Stainless Steel Energy Star Dishwasher
- Birch Cabinets with 42" Wall Cabinets, Crown Moulding and Light Rail
- Elkay Stainless Steel Double Bowl Under Mounted Sink
- Pull Out Faucet in Stainless Steel

### Sustainable Features and Advanced Building Systems for a Healthy, Efficient, and Comfortable Home

- Energy Star rated and Noise Mitigating Vinyl Windows and Sliding Glass Doors
- ThermaTru Energy Star Rated Fiberglass Exterior Doors
- Standard Solar PV Systems
- Structural and Insulated Concrete Basement Floors
- Active Radon Mitigation System
- Engineered Heating and Cooling Systems
- Blown Fiberglass Insulation
- Advance Air-Sealing Package
- 13 Seer Air Conditioning
- Professional Duct Cleaning of Heating and Cooling Systems
- 95% AFUE Energy Star Rated Furnace & Programmable Thermostat
- Whole House Ventilation Fan
- Energy Efficient Sealed Combustion Tankless Water Heater
- Air Tight Can Lights
- Energy Star Commissioning and Certification
- Low VOC Paints and Adhesives
- Domestic Fire Sprinkler System
- Lighting Supplied with Energy Star Rated CFL Light Bulbs
- Water Saving EPA Water Sense Plumbing Fixtures
- "Dark Sky" Exterior Light Fixtures



### Exterior Detailing that Looks Great from All Sides

- Authentic Architectural Styles
- Large Front Porches and Rear Back Yards
- Front Yard Landscaping
- Insulated Steel Garage Doors with Windows
- Garage Door Opener and Keyless Entry Keypad
- Garage Service Door
- Fiber Cement Siding Materials
- 50-Year Asphalt Roof Shingles

# Classic Collection

## STANDARD FEATURES AND FINISHES

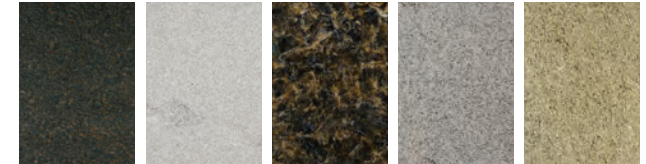
### Kitchen



**Whirlpool Canopy Hood**  
 If app., cooktop on perimeter  
 Stainless steel finish  
 Vented to exterior



**Whirlpool Gas Cooktop**  
 Stainless steel finish  
 36" cast iron grated  
 five-burner cooktop



**Kitchen Solid Granite Countertops**  
 Three cm thickness  
 Four inch granite backsplash  
 Five color choices: Tan/Brown Classic, Pebble Beach,  
 UBA Tuba Classic, Cameo and Venetian Gold Classic



**Whirlpool Downdraft Hood**  
 If app., cooktop on island  
 Stainless steel finish



**Elkay Undermount Kitchen Sink**  
 Stainless steel finish  
 33" x 19" x 8" deep  
 Double equal bowl



**Moen Pull-out Kitchen Faucet**  
 Stainless steel finish  
 Pullout sprayer

### Lighting



**Kichler Foyer Entry**



**Kichler Stairway Wall Sconce**



**Whirlpool Wall Oven and Microwave Combination**  
 Stainless steel finish



**Whirlpool Dishwasher**  
 Stainless steel finish  
 Energy Star rated  
 Quiet Partner III sound package



**Cabinetry**  
 Birch wood, flat panel door  
 Shaker or thin profile rail style,  
 standard overlay  
 Slab drawer fronts  
 Maple melamine drawer boxes  
 42" upper cabinets with  
 crown moulding and light rail



**Kichler Nook Chandelier**



**Kichler 5-Light Dining Chandelier**

# Classic Collection

STANDARD FEATURES AND FINISHES, continued

## Doors and Hardware



**Lynden Carrara Interior Door**

*Hollow-core  
Two panel  
Smooth square top doors*



**Kwikset Front Door Deadbolt Handleset**

*Venetian bronze finish*



**Kwikset Interior Door Lever**

*Satin nickel finish  
Privacy lock on master bedroom and all bathrooms*

## Flooring



**Hardwood Flooring**

*2 1/4" #2 red oak  
Two coats satin poly finish  
Installed in kitchen, entry and powder bath*



**Shaw Carpeting**

*Collinsville, R2x with stain guard protection, 100% recyclable*



**Daltile® Brixton 12" Ceramic Floor Tile**

*Installed in garage entry, all bathrooms and laundry room*

## Bathroom



**Mansfield Self Rimming Vanity Sink**

*White china finish  
Rectangular design  
8" center set holes*



**Moen Eva Faucet**

*Brushed nickel finish  
Two handle 8" widespread*

**Bathroom Countertops**

*1/2" solid white Corian  
In all bathrooms*



**McSTAIN NEIGHBORHOODS®**



McSTAIN  
NEIGHBORHOODS®

We're on a mission here.®

# Classic Collection

## THE MAPLETON – PLAN 6770

2,528 sq ft, 1,146 unfinished sq ft basement  
3-4 bedrooms, 3.5 baths, 2 car garage/optonal 3 car

TRIPLE CROWN  
*Meadows*



ELEVATION A

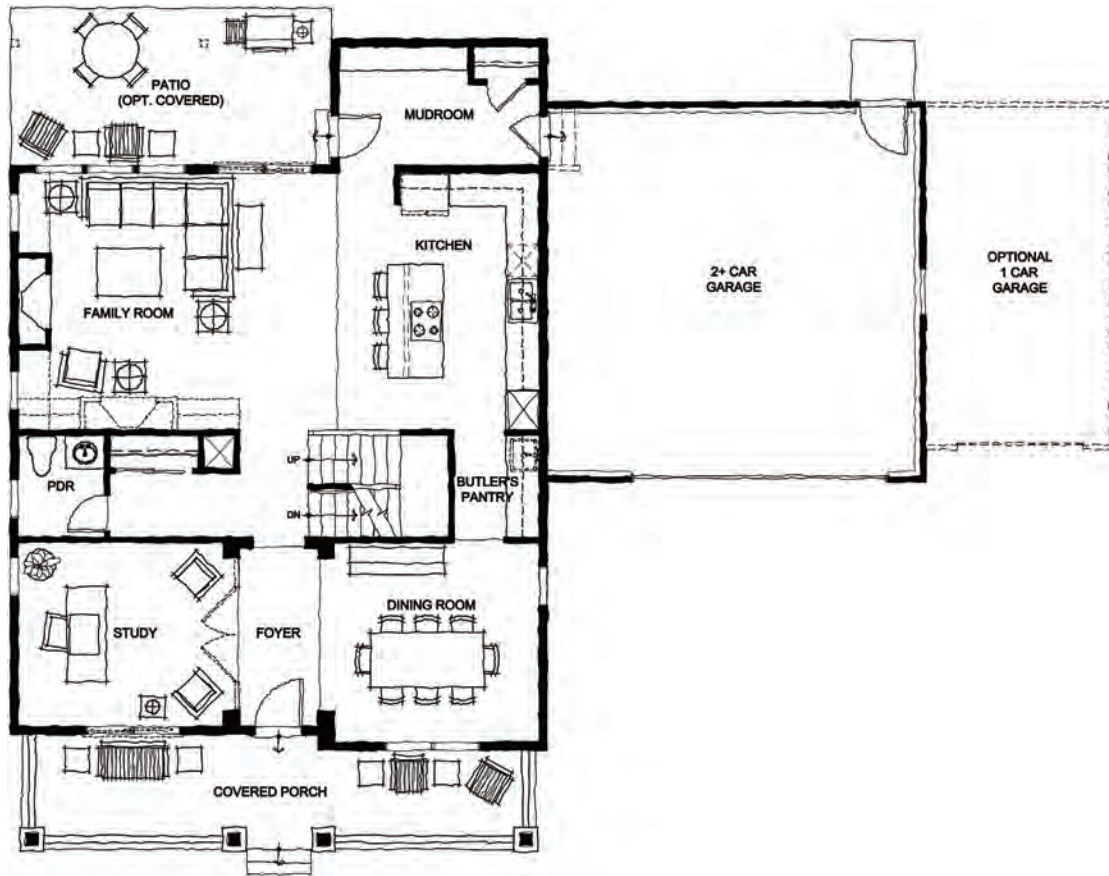


ELEVATION B

[mcstain.com](http://mcstain.com)

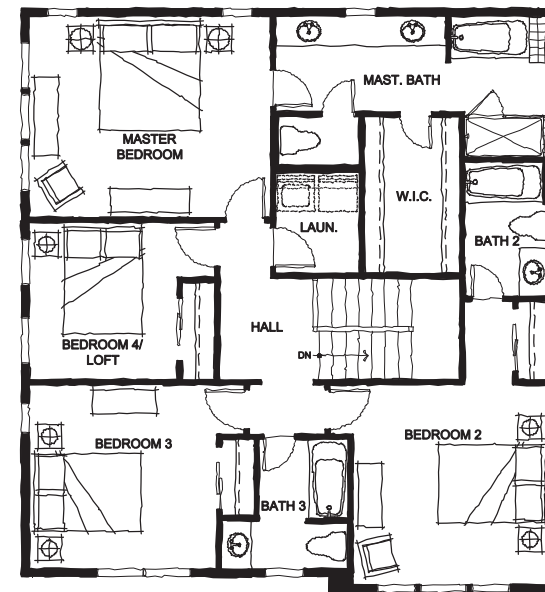
McStain Neighborhoods reserves the right to change plans, elevations, specifications, materials, and pricing without prior notice. Your individual contract supersedes all features listed here and may differ in final details, specifications and finishes. McStain Neighborhoods® and its tagline, "We're on a mission here,"® are registered trademarks of McStain Constructors LLC. ©2014 McStain Neighborhoods. All Rights Reserved. APD010614 1/18/14





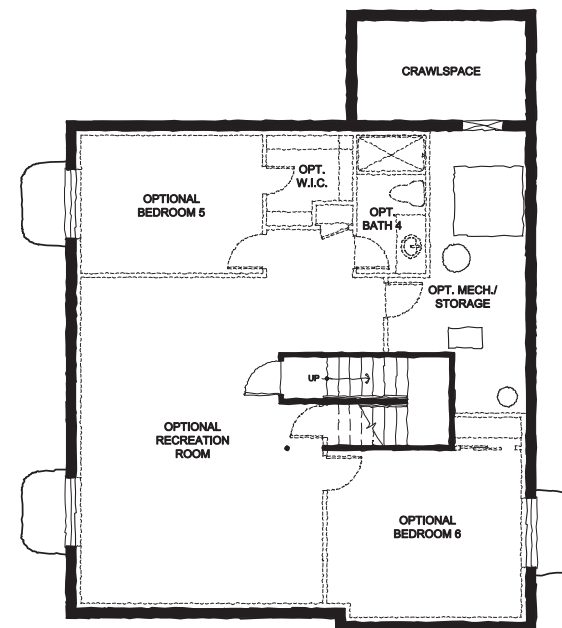
**MAIN LEVEL ▲**

- |                          |                          |                           |                                   |                                |
|--------------------------|--------------------------|---------------------------|-----------------------------------|--------------------------------|
| Family Room<br>18' x 16' | Dining Room<br>13' x 13' | Covered Porch<br>32' x 7' | Patio (Opt. Covered)<br>20' x 10' | Opt. 1 Car Garage<br>12' x 21' |
| Kitchen<br>12' x 16'     | Study<br>13' x 12'       | Mudroom<br>13' x 7'       | 2 Car Garage<br>24' x 23'         |                                |



**◀ UPPER LEVEL**

- Master Bedroom  
15' x 13'
- Bedroom #2  
12' x 13'
- Bedroom #3  
12' x 12'
- Bedroom #4/  
Loft  
9' x 10'



**◀ BASEMENT LEVEL**

*1,146 unfinished square feet*

- Optional Recreation Room  
18' x 24'
- Optional Bedroom #5  
13' x 10'
- Optional Bedroom #6  
14' x 12'
- Opt. Unfin. Mech. Room/Storage  
7' x 20'



McSTAIN  
NEIGHBORHOODS®

We're on a mission here.®

# Classic Collection

## THE SHANAHAN – PLAN 6750

2,866 sq ft, 1,347 unfinished sq ft basement  
4 bedrooms, 3.5 baths, 3 car tandem garage/opt. 4 car

TRIPLE CROWN  
*Meadows*



ELEVATION A

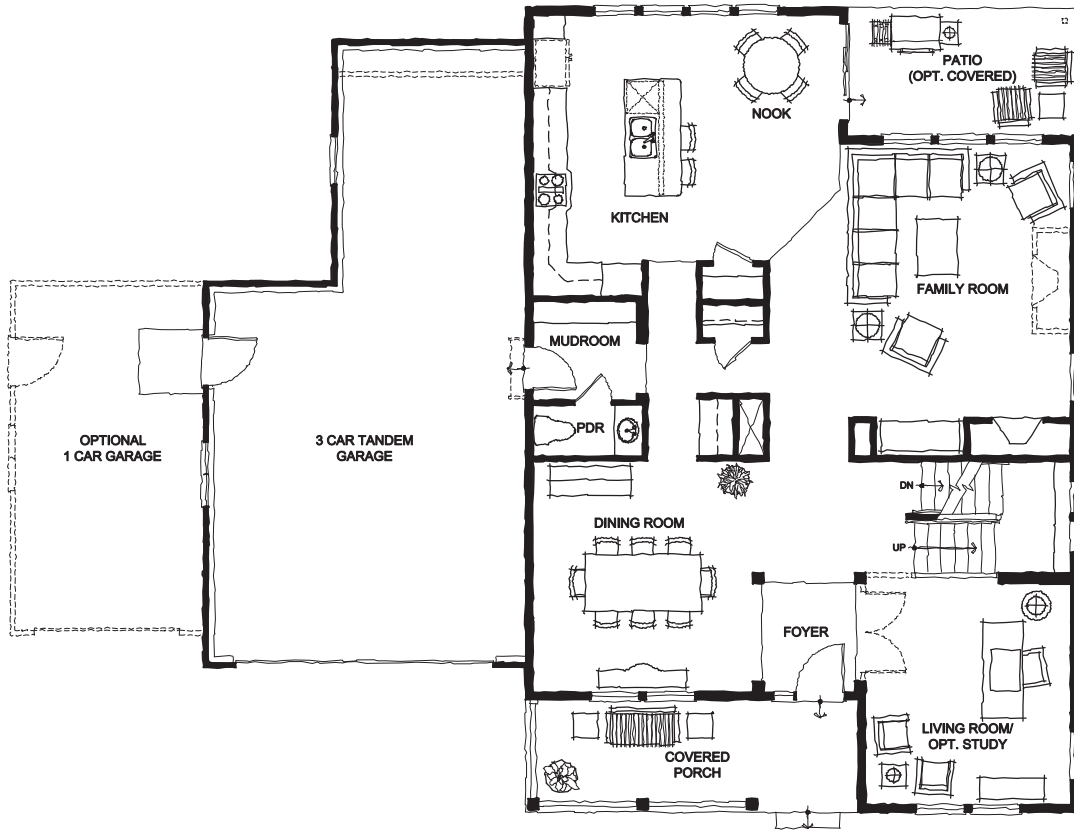


ELEVATION B

[mcstain.com](http://mcstain.com)

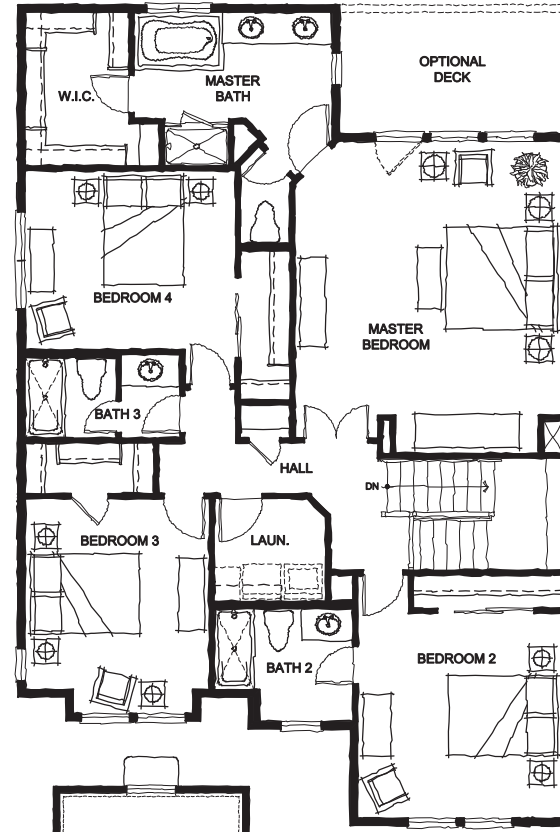
McStain Neighborhoods reserves the right to change plans, elevations, specifications, materials, and pricing without prior notice. Your individual contract supersedes all features listed here and may differ in final details, specifications and finishes. McStain Neighborhoods® and its tagline, "We're on a mission here,®" are registered trademarks of McStain Constructors LLC. ©2014 McStain Neighborhoods. All Rights Reserved. APD112213 1/18/14





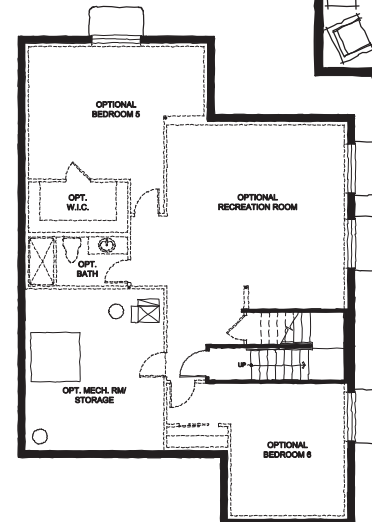
**MAIN LEVEL ▲**

- |   |                           |                                  |
|---|---------------------------|----------------------------------|
| Family Room<br>15' x 19'                | Dining Room<br>14' x 14'  | Patio (Opt. Covered)<br>8' x 14' |
| Living Room/<br>Opt. Study<br>13' x 14' | Nook<br>8' x 8'           | 3 Car Tandem Garage<br>20' x 38' |
| Kitchen<br>12' x 17'                    | Covered Porch<br>21' x 7' | Opt. 1 Car Garage<br>12' x 21'   |



**◀ UPPER LEVEL**

- Master Bedroom  
17' x 18'
- Bedroom #2  
13' x 13'
- Bedroom #3  
11' x 12'
- Bedroom #4  
13' x 11'
- Optional Deck  
14' x 8'



**◀ BASEMENT LEVEL**

*1,347 unfinished square feet*

- Optional Recreation Room  
18' x 19'
- Optional Bedroom #5  
18' x 13'
- Optional Bedroom #6  
12' x 13'
- Opt. Unfin. Mech. Room/Storage  
14' x 16'



MCSTAIN  
NEIGHBORHOODS®

We're on a mission here.®

# Classic Collection

THE SUNDANCE – PLAN 6745

2,395 sq ft, 1,075 unfinished sq ft basement  
3-4 bedrooms, 2.5 baths, 2 car garage/optional 3 car

TRIPLE CROWN  
Meadows



ELEVATION A



ELEVATION B

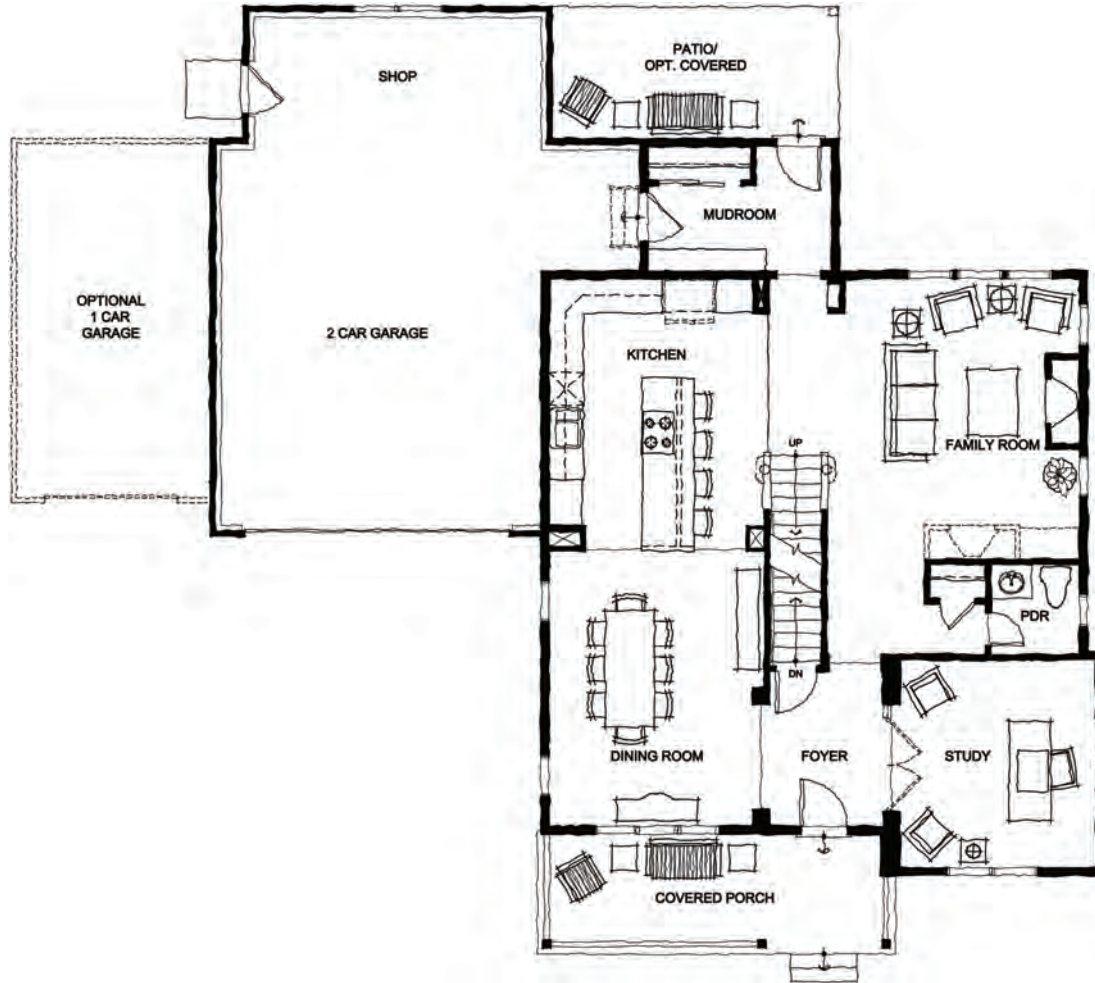
[mcstain.com](http://mcstain.com)

McStain Neighborhoods reserves the right to change plans, elevations, specifications, materials, and pricing without prior notice. Your individual contract supersedes all features listed here and may differ in final details, specifications and finishes. McStain Neighborhoods® and its tagline, "We're on a mission here,"® are registered trademarks of McStain Constructors LLC. ©2014 McStain Neighborhoods. All Rights Reserved. APD010614 1/18/14



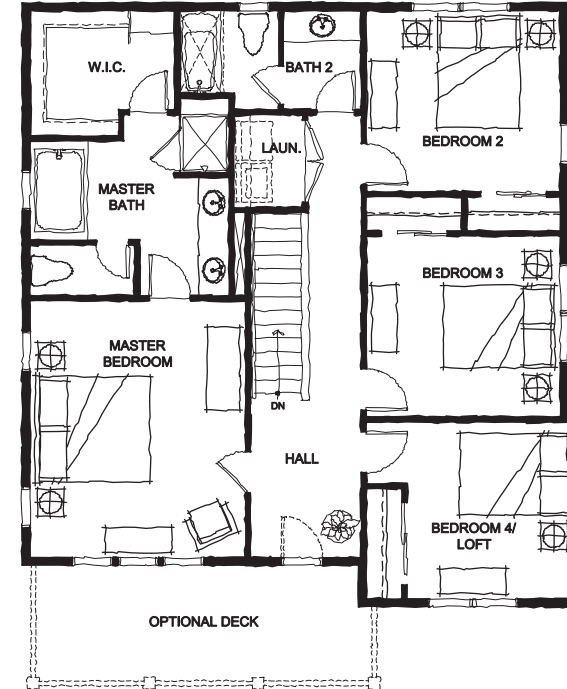
Copper West  
colorado





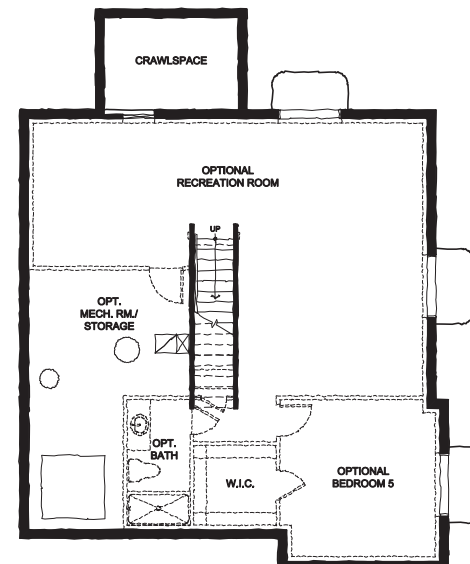
MAIN LEVEL ▲

Family Room 13' x 17'	Dining Room 13' x 17'	Mudroom 11' x 7'	Patio (Opt. Covered) 17' x 8'	Shop 18' x 8'
Kitchen 12' x 15'	Study 12' x 13'	Covered Porch 21' x 7'	2 Car Garage 20' x 23'	Opt. 1 Car Garage 12' x 21'



◀ UPPER LEVEL

- Master Bedroom  
13' x 15'
- Bedroom #2  
12' x 11'
- Bedroom #3  
12' x 11'
- Bedroom #4/  
Loft  
10' x 11'
- Optional Deck  
20' x 7'



◀ BASEMENT LEVEL

1,075 unfinished square feet

- Optional Recreation Room  
31' x 22'
- Optional Bedroom #5  
11' x 12'
- Opt. Unfin. Mech. Room/Storage  
13' x 21'



MCSTAIN  
NEIGHBORHOODS®

We're on a mission here.®

# Classic Collection

THE CRESTVIEW – PLAN 6735

2,077 sq ft, 930 unfinished sq ft basement  
3-4 bedrooms, 3.5 baths, 3 car tandem garage/opt. 4 car

TRIPLE CROWN  
Meadows



ELEVATION A



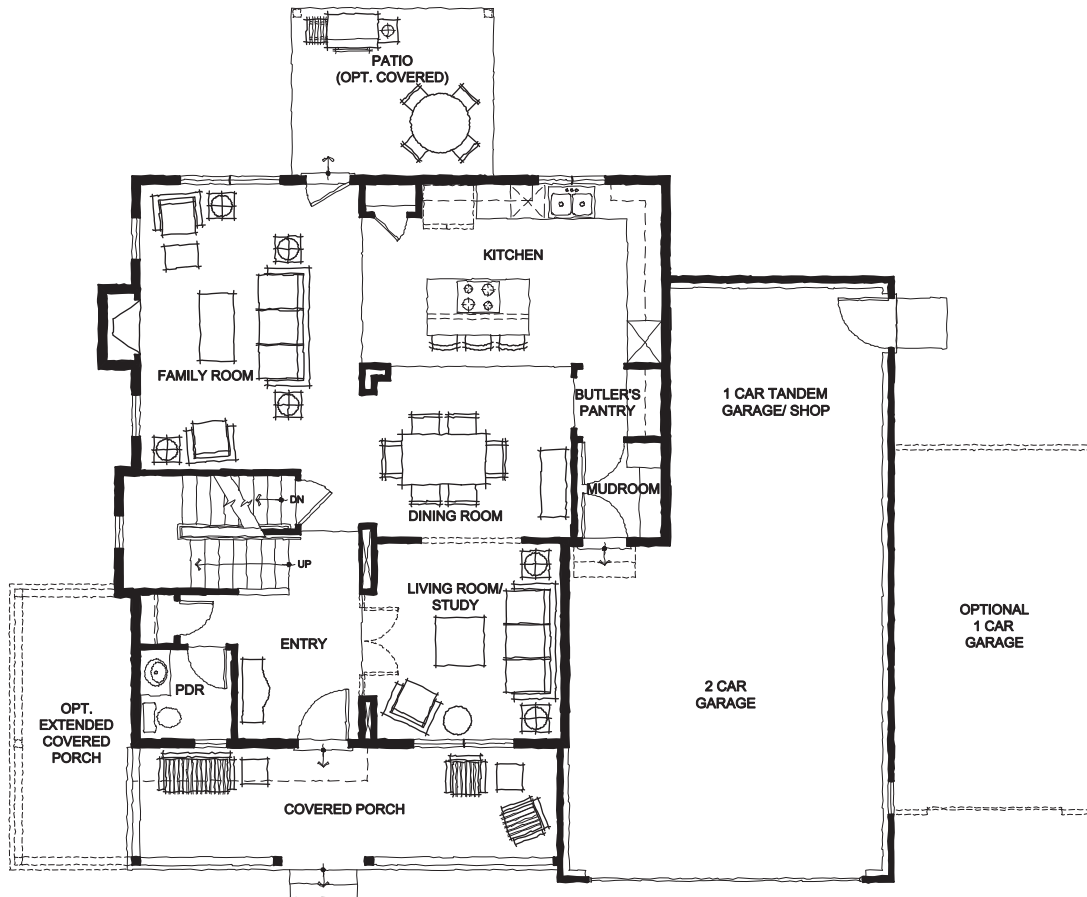
ELEVATION B

[mcstain.com](http://mcstain.com)

McStain Neighborhoods reserves the right to change plans, elevations, specifications, materials, and pricing without prior notice. Your individual contract supersedes all features listed here and may differ in final details, specifications and finishes. McStain Neighborhoods® and its tagline, "We're on a mission here,"® are registered trademarks of McStain Constructors LLC. ©2014 McStain Neighborhoods. All Rights Reserved. APD010614 1/18/14

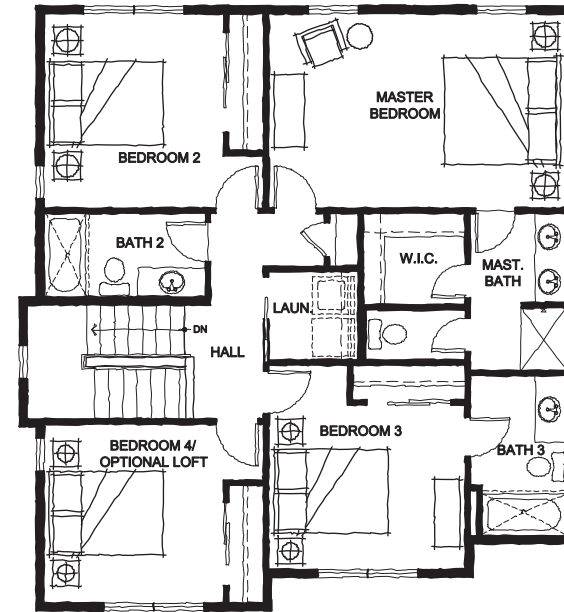


Copper West  
colorado



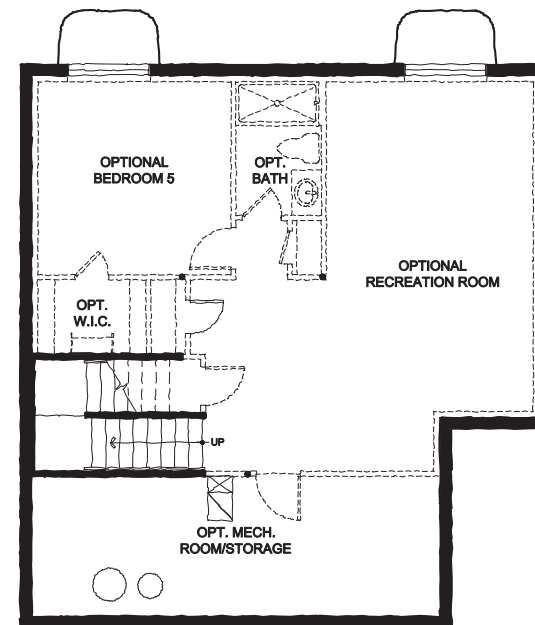
**MAIN LEVEL ▲**

Family Room 13' x 17'	Dining Room 12' x 10'	Opt. Extended Covered Porch 7' x 17'	Patio 14' x 10'	1 Car Tandem Garage/Shop 13' x 16'
Living/Study 11' x 12'	Nook 6' x 3'	Opt. Extended Covered Patio 20' x 8'	2 Car Garage 19' x 20'	Opt. 1 Car Garage 12' x 21'
Kitchen 18' x 11'	Covered Porch 25' x 7'			



**◀ UPPER LEVEL**

- Master Bedroom  
18' x 12'
- Bedroom #2  
11' x 12'
- Bedroom #3  
12' x 10'
- Bedroom #4/  
Loft  
11' x 11'



**◀ BASEMENT LEVEL**

- 930 unfinished square feet*
- Optional Recreation Room  
20' x 23'
- Optional Bedroom #5  
11' x 11'
- Opt. Unfin. Mech. Room/Storage  
25' x 8'



McSTAIN  
NEIGHBORHOODS®

We're on a mission here.®

# Classic Collection

THE COLORADO RANCH – PLAN 6710

2,248 sq ft, 1,679 unfinished sq ft basement  
2-3 bedrooms, 2-3 baths, 3 car tandem garage/opt. 4 car

TRIPLE CROWN  
*Meadows*



ELEVATION A



ELEVATION B

[mcstain.com](http://mcstain.com)

McStain Neighborhoods reserves the right to change plans, elevations, specifications, materials, and pricing without prior notice. Your individual contract supersedes all features listed here and may differ in final details, specifications and finishes. McStain Neighborhoods® and its tagline, "We're on a mission here,®" are registered trademarks of McStain Constructors LLC. ©2014 McStain Neighborhoods. All Rights Reserved. APD010614 1/18/14

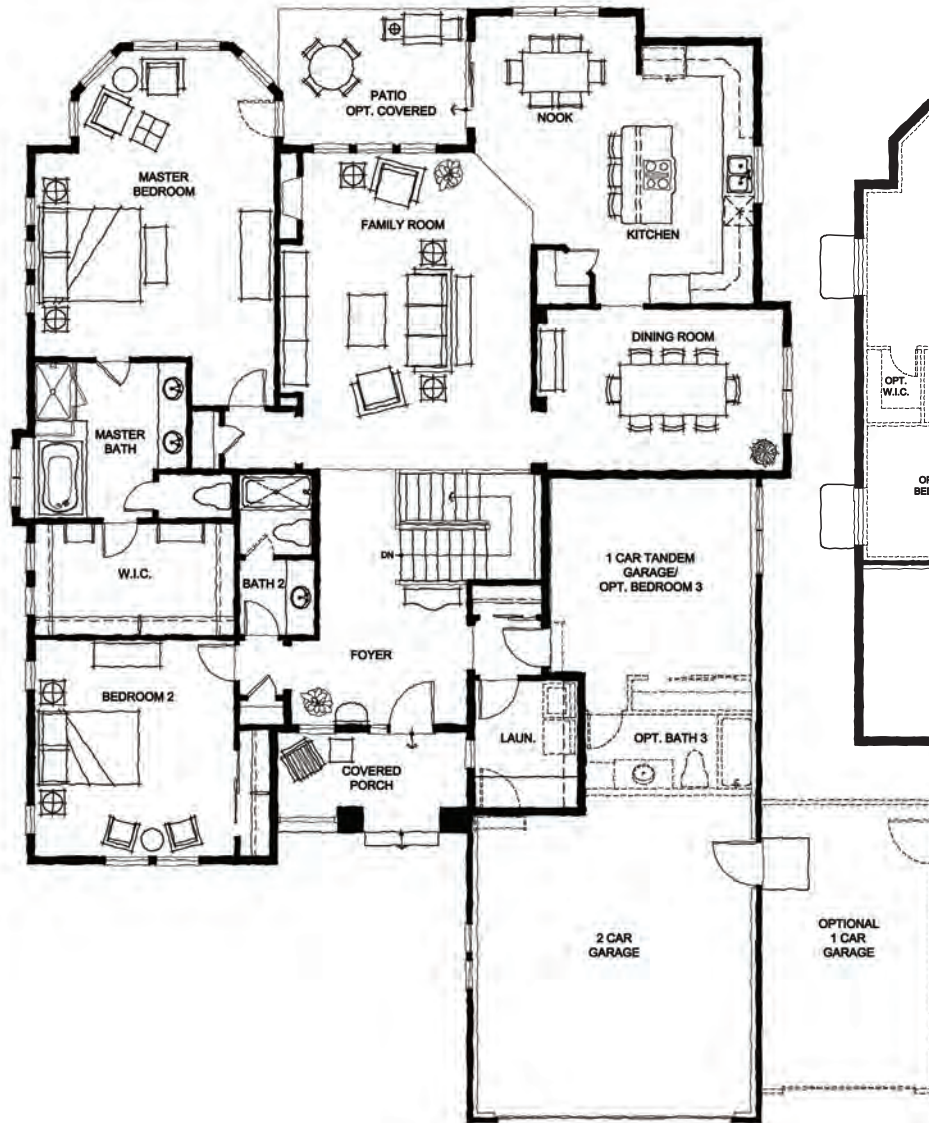


# Classic Collection THE COLORADO RANCH – PLAN 6710

2,248 sq ft, 1,679 unfinished sq ft basement,  
2-3 bedrooms, 2-3 baths, 3 car tandem garage/optional 4 car

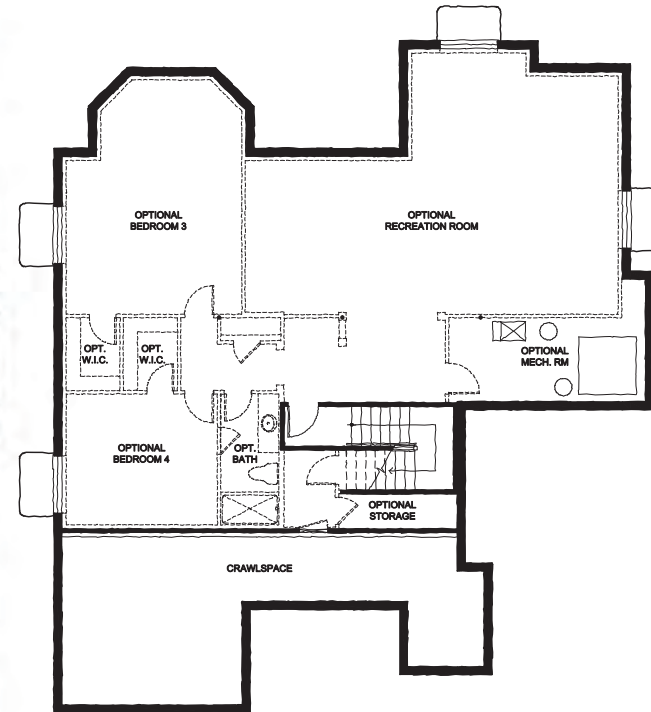
## MAIN LEVEL ▶

- Family Room  
16' x 17'
- Kitchen  
15' x 18'
- Dining Room  
16' x 11'
- Nook  
11' x 9'
- Master Bedroom  
16' x 21'
- Bedroom #2  
14' x 15'
- Optional  
Bedroom #3  
14' x 13'
- Patio  
13' x 9'
- 2 Car Garage  
19' x 22'
- 1 Car Tandem  
Garage  
14' x 22'
- Optional  
1 Car Garage  
12' x 19'



## ◀ BASEMENT LEVEL

- 1,679 unfinished  
square feet
- Optional  
Recreation Room  
32' x 22'
- Optional  
Bedroom #3  
15' x 20'
- Optional  
Bedroom #4  
13' x 12'
- Opt. Unfin.  
Mech. Room  
17' x 7'





MCSTAIN  
NEIGHBORHOODS®

We're on a mission here.®

# Classic Collection

## THE PINE BROOK – PLAN 6705

1,932 sq ft, 1,403 unfinished sq ft basement  
2-3 bedrooms, 2.5 baths, 2 car garage

TRIPLE CROWN  
*Meadows*



ELEVATION A



ELEVATION B

[mcstain.com](http://mcstain.com)

McStain Neighborhoods reserves the right to change plans, elevations, specifications, materials, and pricing without prior notice. Your individual contract supersedes all features listed here and may differ in final details, specifications and finishes. McStain Neighborhoods® and its tagline, "We're on a mission here,"® are registered trademarks of McStain Constructors LLC. ©2014 McStain Neighborhoods. All Rights Reserved. APD010614 1/18/14



MAIN LEVEL ▶

Family Room  
17' x 16'

Kitchen  
9' x 16'

Dining Room  
13' x 13'

Master Bedroom  
15' x 15'

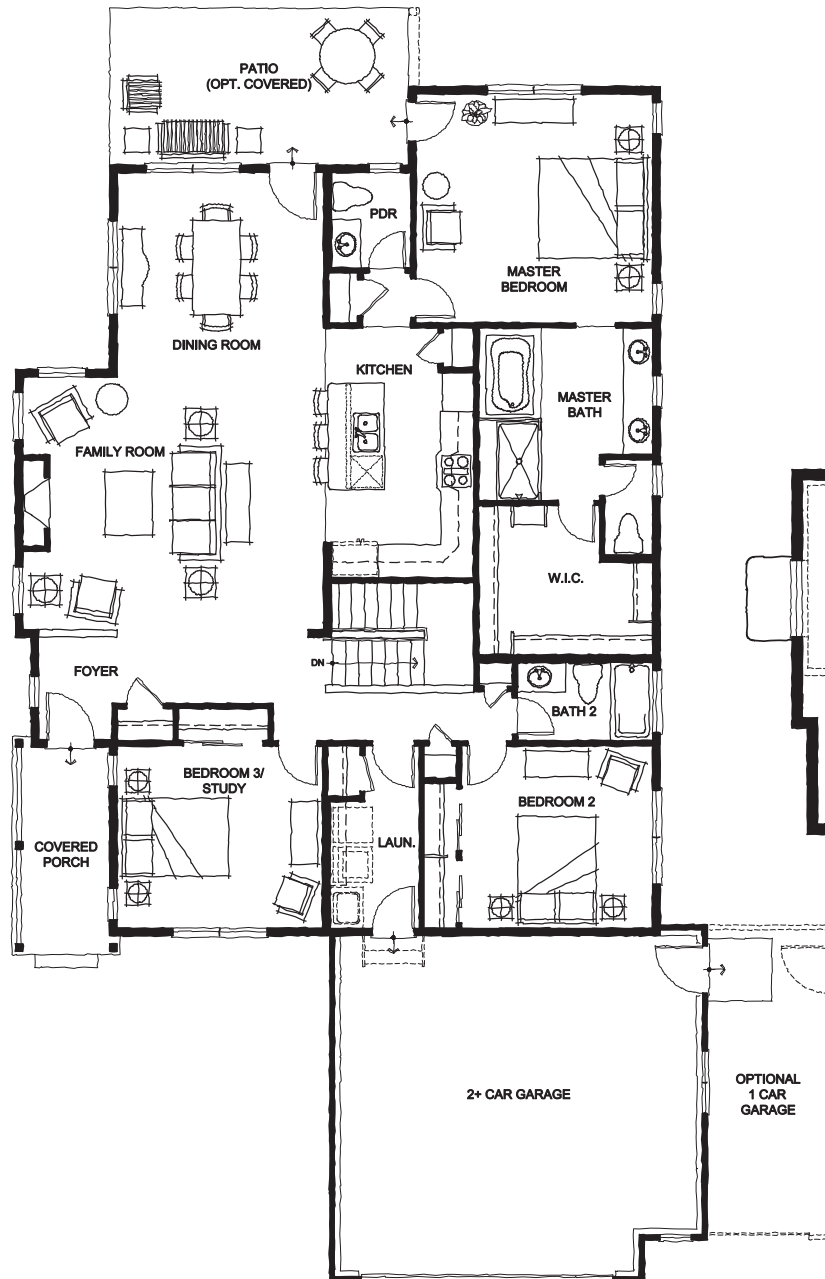
Bedroom #2  
12' x 12'

Bedroom #3/  
Study  
13' x 12'

Patio (Optional  
Covered)  
19' x 10'

2+ Car Garage  
23' x 21'

Optional 1 Car  
Garage  
8' x 19'



◀ BASEMENT LEVEL

1,403 unfinished  
square feet

Optional  
Recreation Room  
(w/ Partial Bsmt.)  
25' x 25'

Optional  
Bedroom #4  
14' x 15'

Opt. Unfin. Mech.  
Room/Storage  
14' x 17'

Optional  
Unfin. Storage  
18' x 12'

